



# COMPANY PROFILE

MOHAMMED HASSAN ALMARHOON FOR  
CONTRACTING EST. For Building Contracting

**Call us**  
0592329710

**More info**  
[www.mhaksa.com](http://www.mhaksa.com)





# ABOUT US

MOHD H. AL MARHOON CONT EST. is a leading and established contracting company with 15+ Years of Work Experience in providing specialized engineering and installation services across the Gulf region. We take pride in our extensive portfolio, having successfully completed 400+ Jobs with a dedicated focus on achieving high Client Satisfaction.

Our core expertise lies in the installation, fitting, and maintenance of various non-metallic piping systems, including RTR PIPE, GRP, GRE, and FRP pipes, along with specialized Fiber Glass Work and comprehensive Sewer Line Installation Work. Supported by a robust and skilled Work Force of 60+ professionals, we are committed to delivering projects safely, on time, and to the highest quality standards, ensuring maximum value for our clients.

At MOHD H. AL MARHOON CONT EST., we are not just contractors; we are partners committed to providing efficient, long-lasting, and cost-effective solutions. We continue to look forward, maintaining the trust and satisfaction of our clients in every project we undertake.



# OUR VALUES

Our principles ensure we uphold the highest standards in every installation and service we provide.

- **Integrity:** We operate with complete honesty and transparency in all our dealings.
- **Quality Workmanship:** We ensure superior quality and durability in all specialized piping and fiberglass work.
- **Client Commitment:** We prioritize client needs and satisfaction, building long-term trust.
- **Safety:** We maintain strict safety standards for our team and project sites.
- **Expertise:** We utilize our 15+ years of experience to deliver reliable, professional solutions.

## GENERAL INFORMATION

- **Company Name:** MOHD H. AL MARHOON CONT EST.
- **Core Services:** RTR PIPE Installation, GRP Pipe Installation, GRE Pipe Fittings, FRP PIPE Installation, Fiber Glass Work, Sewer Line Installation Work.
- **Experience:** 15+ Years
- **Projects Completed:** 400+
- **Workforce:** 60+ Professionals
- **Client Satisfaction:** 165+ Satisfied Clients (This is interpreted as the high level of satisfaction from past clients).





# OBJECTIVE

Our primary objective is to be the most trusted and reliable partner for non-metallic piping and fiberglass solutions in the industry.

Quality Excellence: To consistently deliver installation and fitting work that exceeds international standards and client expectations for durability, integrity, and performance.

Client Focus: To maintain a 165+ Client Satisfaction record by understanding and fulfilling unique project requirements with professionalism and dedication.

Operational Efficiency: To leverage our 15+ years of experience and 60+ skilled Work Force to complete projects efficiently, safely, and within the stipulated timeline and budget.

# MISSION STATEMENT

"To deliver exceptional, high-quality, and reliable RTR, GRP, GRE, and FRP piping solutions, supported by our experienced team and proven track record of over 400 successfully Completed Jobs, ensuring long-term client satisfaction and infrastructure integrity."





# OUR SERVICES



RTR



GRP & GRE



FRP



Fiber Glass Work



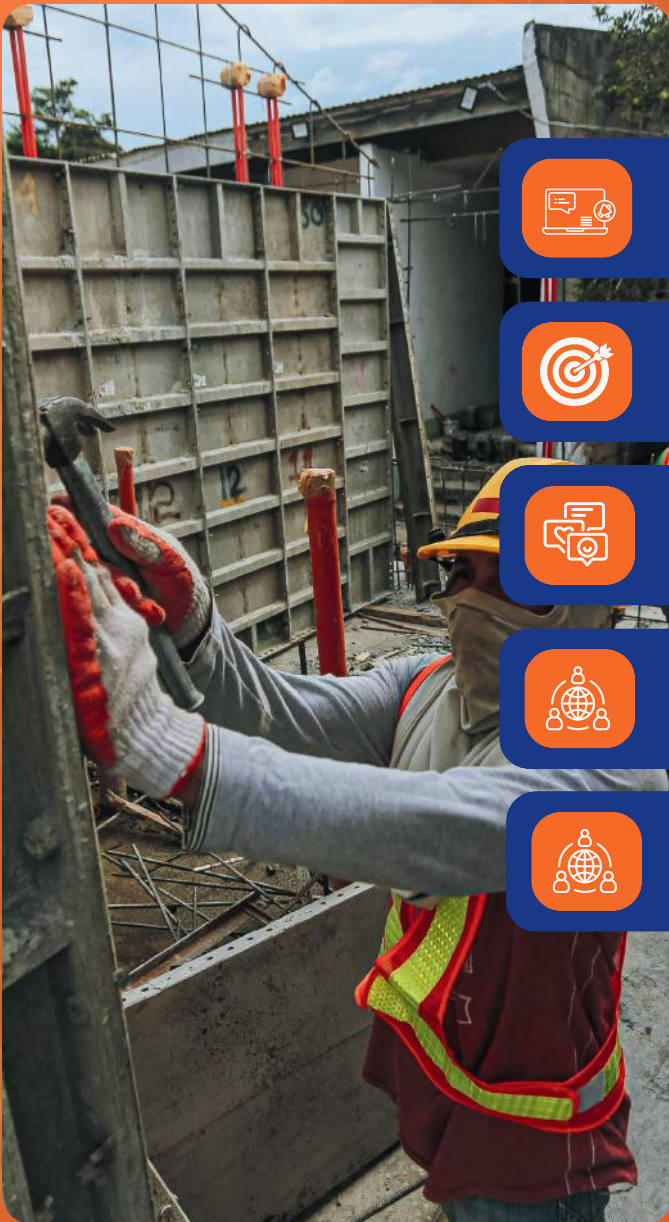
Sewer Line



Supplies OF General Work



# OUR CONTRACTS



Sky Arabi Company



Global Souch Company



KCC Company



First Time Company



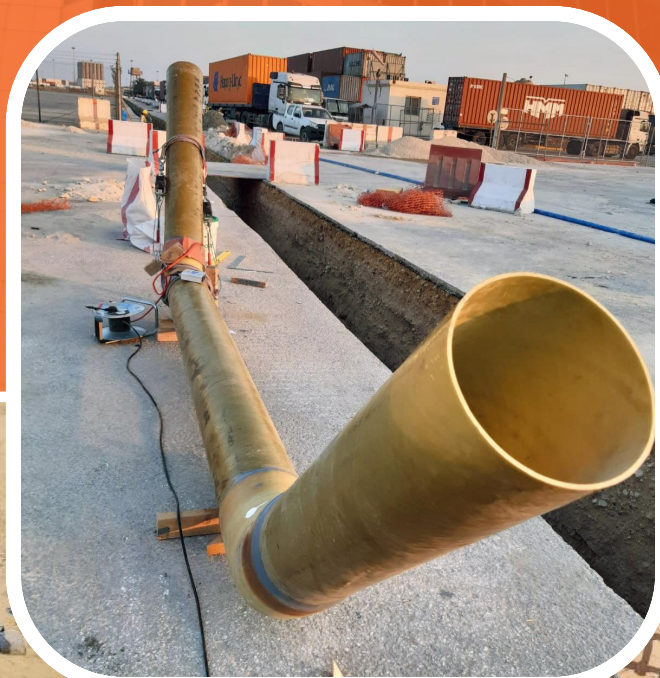
Sidem Marafiq



# RTR PIPE INSTALLATION WORK

RTR (Reinforced Thermosetting Resin) pipe fittings are components for piping systems made from a composite of glass fibers and thermosetting resins, offering high strength and corrosion resistance.

They are used in demanding industrial applications like oil and gas, chemical processing, and water treatment, as well as in HVAC systems for carrying refrigerants and fluids. Fittings like elbows, tees, and caps are engineered to connect RTR pipes and handle high-pressure and aggressive chemical environments.





# GRP PIPE INSTALLATION WORK

GRP (Glass Reinforced Plastic) and GRE (Glass Reinforced Epoxy) fittings are components used to connect, adapt, or control the flow in pipe systems made from fiberglass-reinforced composites, with the main difference being the type of resin used.

GRP fittings typically use isophthalic resin, while GRE fittings use epoxy resin, which makes GRE suitable for higher-temperature applications and harsher industrial environments due to its superior chemical and corrosion resistance.





# GRE PIPE FITTINGS

GRE fittings are essential components for Glass Reinforced Epoxy piping systems, made from fiberglass and epoxy resin, offering superior corrosion resistance, lightweight design, and high strength for demanding applications in offshore, marine, chemical, and oil & gas industries, replacing traditional metal pipes for handling aggressive fluids and high pressures.

Material: Composite of high-strength glass fibers (E-glass) wound with an epoxy resin binder. Construction: Formed using a filament winding process for continuous strength. .







# FRP PIPE INSTALLATION WORK

FRP (Fiber-Reinforced Plastic) pipes and fittings are corrosion-resistant, durable composite materials used for transporting fluids in demanding industries like chemical processing, water treatment, and power generation. They are made from glass fibers embedded in a polymer resin, offering advantages like light weight, long life, and high strength.



# FIBER GLASS WORK

Fiberglass work is a process of using fiberglass fabric and resins to create strong, lightweight composite materials for applications like boat building, construction, and automotive parts.

The process involves preparing the surface, cutting the fiberglass fabric, mixing the resin and catalyst, applying the resin to the surface, and carefully laying the fabric, removing air bubbles, and allowing it to cure. It's important to wear appropriate safety gear, as fiberglass fibers can be an irritant.



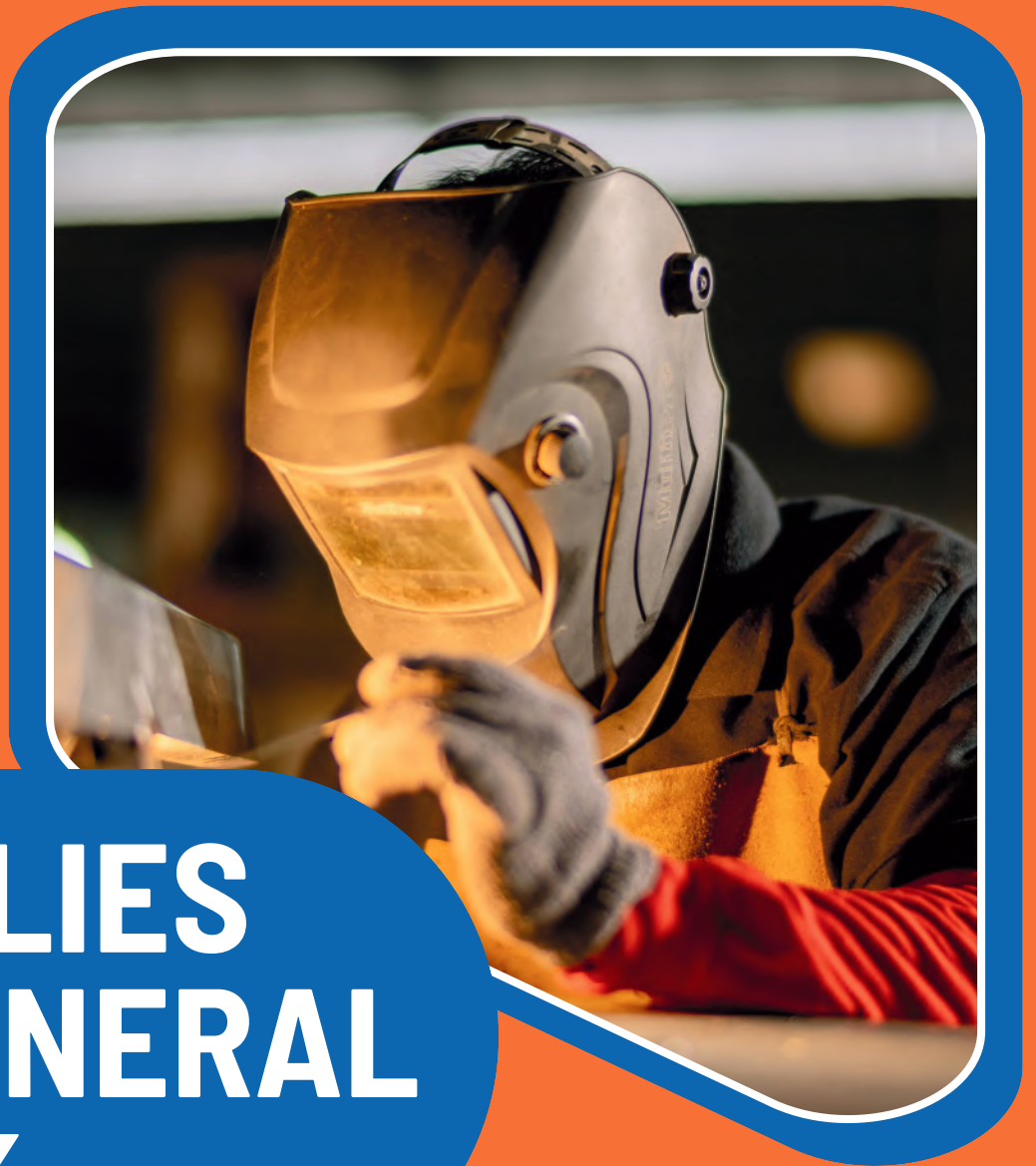


# SEWER LINE INSTALLATION WORK



A sewer line is an underground pipe that carries wastewater and sewage from buildings to a public sewer system or a private septic tank. This system protects public health and the environment by transporting waste to treatment plants where it is cleaned before being released. Sewer lines can be made from materials like PVC or ABS plastic, and a building's connection typically leads to the main sewer line in the street.





# SUPPLIES OF GENERAL WORK

Supplies for general work include essential hand tools (wrenches, screwdrivers, hammers), material handling equipment (hand trucks, dollies), and critical personal protective equipment (PPE) such as hard hats, safety glasses, gloves, and steel-toed boots. The specific tools and supplies can also include basic power tools (drills, saws) and versatile, adaptable workwear with pockets and protective features.







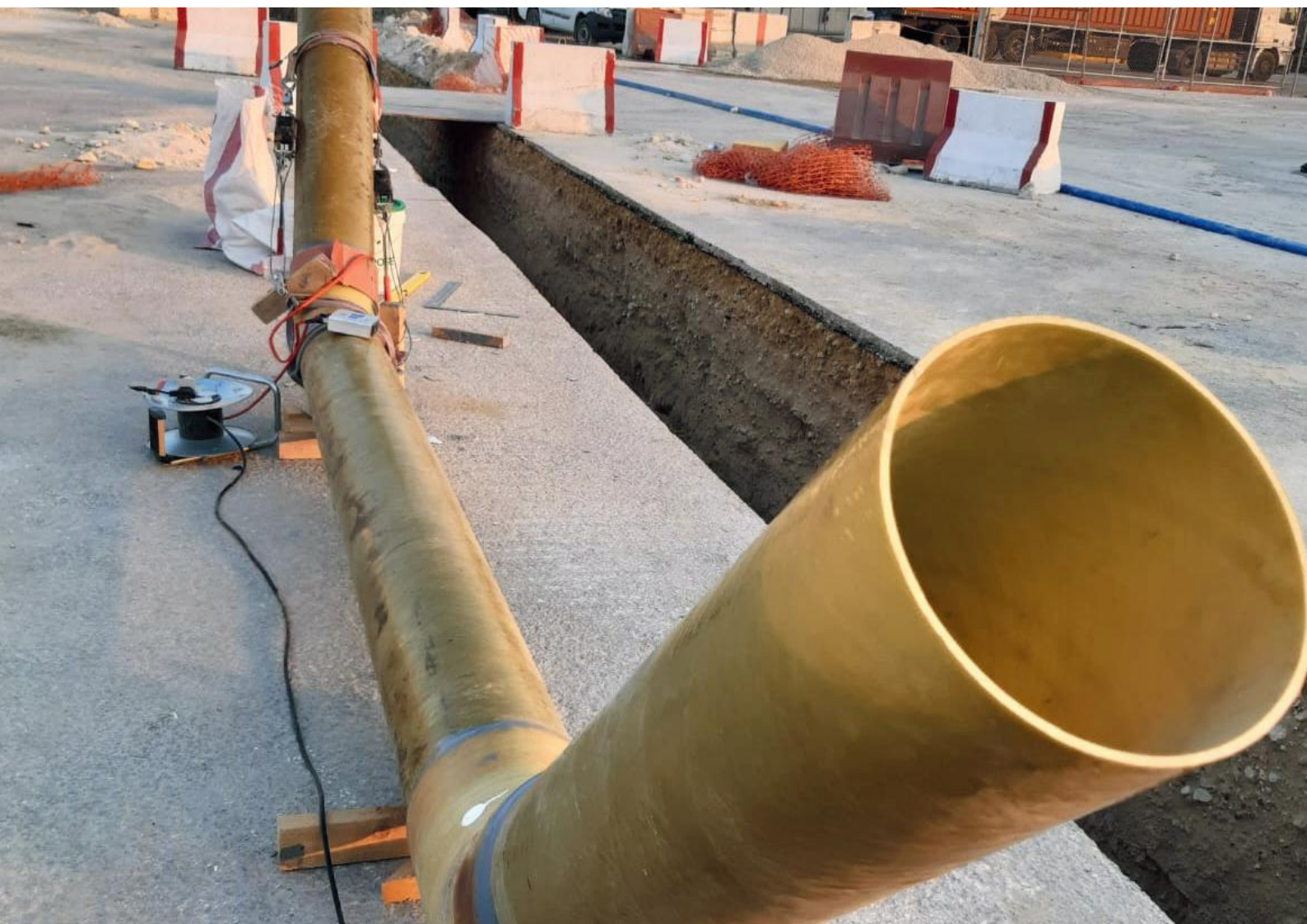


















## CLIENTS WE ARE FOCUSING

أمينات  
Aminat

أرامكو السعودية  
saudi aramco



الصحراء  
للپتروكیمایات  
sahara petrochemicals

المتقدمة  
Advanced



شیفرن العربیة السعودیة  
Saudi Arabian Chevron



الشركة الكويتية للنفط الخليج  
KUWAIT GULF OIL COMPANY

KJO

أرامكو لأممال الفلیج  
Aramco Gulf Operations

AL KHAJEI JOINT OPERATIONS عملیات الخفجی المشتركة



التصنیة  
TASNEE

سابك  
عنداك

نماء  
NAMA  
للکیمیائات  
CHEMICALS

جنا  
JANA

سبکیم  
Sipchem  
EXCELLENCE everywhere





# HSE POLICY

It is the policy of to ensure the protection of the environment and to create a safe and healthy working condition at all workplace for workers, visitors, clients, partners, shareholders, the community and all other relevant interested parties.

We are committed to achieve its vision for HSE excellence We'll examine what is quality management, how service quality is determined, what can stand in the way of quality programs, and what processes you can put in place to ensure the highest quality for any job.

Provide safe and healthy working place and conditions for the prevention of work-related injury and ill health.

Promote environmental protection and prevention of pollution within the company. Reduce, and striving to eliminate, the environmental company's activities, operations and impacts associated with services.







## Let's Work Together

### Website



### WhatsApp



### Number



### Number



 +966592329710

 +966553094452

 [info@mhaksa.com](mailto:info@mhaksa.com)

 [www.mhaksa.com](http://www.mhaksa.com)

 Jubail and Khobar,  
Qatif, Dammam,  
Kingdom of Saudi Arabia.

### Our Location

